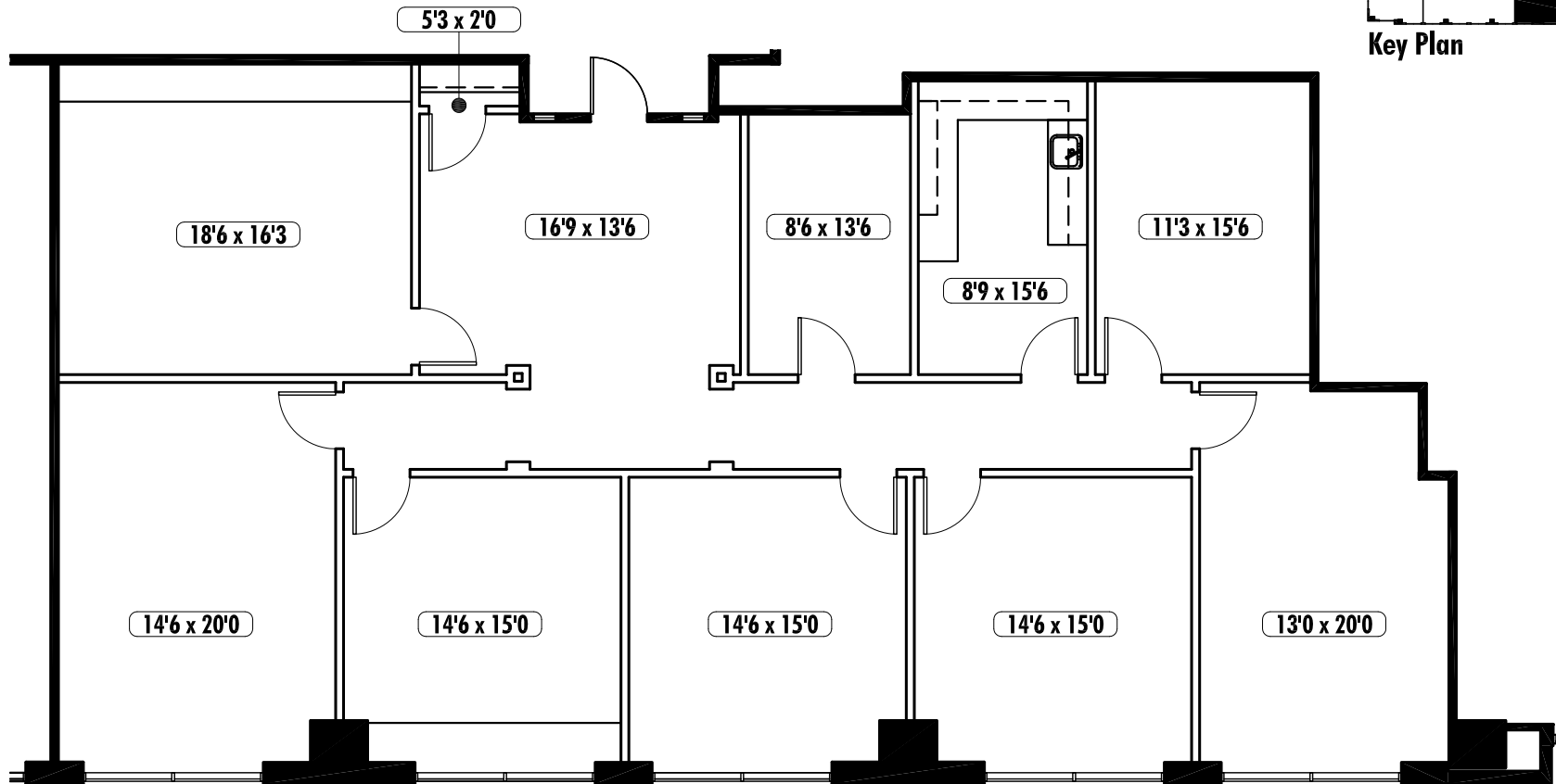


Key Plan



North 0 5 10 20

**T** **TRANSWESTERN**<sup>®</sup>  
The Performance Advantage in Real Estate

**Greg Frankum**  
(404) 842-6565  
greg.frankum@transwestern.com

**Matt Spickard**  
(404) 842-6566  
matt.spickard@transwestern.com

**Resurgens Plaza • Suite 2220 • 3,010 RSF**

**Available Suite**